



VOLUME 9, ISSUE 6

FEBRUARY 2015

**INSIDE
THIS ISSUE:**

Officer / Committee List	2
Events Calendar	3
President's Message	4
January Meeting Recap	5
February Meeting Info	6
Job Postings	7
CTTC / Programs	8
Young Engineers	8
Membership Promotion	9
Student Member- ship Application	10
Valentine's Day Dinner Dance	12
Board of Gov. Meeting Minutes	15
Engineering Symposium	18
ASHRAE Scholarships	20
Existing Building Commissioning Webcast	21
Society News	22

Save the Date!

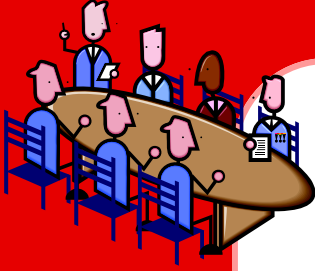
**2015 Annual Engineering Symposium in
Rochester**

Earn up to 7 PDHs!

sponsored by Rochester's Technical and Engineering Societies and RIT



(refer to page 18 for more details)



Chapter Officers

President

Edward J. Burns
585-739-7548 / 872-9172(fax)
ejb@mechtechvac.com

President Elect

Christina Walter
585-486-2148
cmwalter@trane.com

Secretary

Jeff Close, PE
585-289-6816 / 218-0737(fax)
jeff.close@pres-services.com

Treasurer

William J. Clark
585-303-0729
william.clark@DayAutomation.com

Committee Chairs

CTTC / Programs

Jeff Wiedrick 585-232-5137 x354
jwiedrick@bergmannpc.com

CTTC / TEGA

Tom Burke
amtburke@yahoo.com

CTTC / Refrigeration

Michael Nohle 585-216-9016
mikenohle@aol.com

Historian

Lee Loomis 585-262-2870/262-4156(fax)
leeloomis46@gmail.com

Membership

Jake Hall 585-869-5125
jhall@proairplus.com

YEA

Matt Kremers 585-398-8018
mkremers@mcsmms.com

Student Activities

Chris Lukasiewicz 585-381-3360 x135

Board of Governors

Eric Smith (3)
585-381-3360
esmith@turnerengineering.com

Paul Kenna, PE (3)
585-295-3114
Paul.Kenna@carrierenterprise.com

Scott Edwards (2)
585-486-2156
sgedwards@rochester.rr.com

Mike Benedict (2)
585-490-2661
mjbenedict5@gmail.com

Branden Farnsworth-Weinblatt
585-364-1628
bfweinblatt@poplgroup.com

Tom Streber
585-272-9450
tstreber@jswanson.com

Newsletter Editor

Scott Edwards
ashraerocnews@gmail.com

Attendance & Reception

Timothy Duprey 585-330-6430
tduprey@rochester.rr.com

Publicity

Mark Kukla 585-232-3440
mark@airsystemsbalancing.com

Research Promotion

Paul Kenna 585-295-3114
Paul.Kenna@carrierenterprise.com

Webmaster

Kevin Wind 585-263-1280
kwind@rochester.rr.com

Nominating

Michelle Sommerman, PE 585-232-5135
msommerman@bergmannpc.com

Buyer's Guide

Stephanie Dempsey 585-232-2462
sdempsey@bergmannpc.com

ASHRAE 2014-2015 Meeting Schedule				
Date	Event	pdh / Theme	Location	Schedule
02/06/15	Annual ASHRAE Valentines Dinner Dance	---	Colgate Rochester Crozer Divinity School	7:00 PM
02/09/15	Air Flow Measurement for improved IAQ and Building Pressure Control Mr. Jim Riendeau, Vice President, Ebtron	LEED, PDH credit available	Mario's	12:00 PM
03/09/15	How to use Classroom Airhandlers with S12.60 to meet RC25 Classroom Design for Intelligently Quiet Schools Mr. Kevin McGachy Systemair Change'Air	Available Membership Promotion	Mario's	12:00 PM
04/06/15	Ethical Decision Making Barry Benator, PE, CEM - Benator, Inc. ASHRAE Distinguished Lecturer	Available	Mario's	11:00 AM
05/11/15	Annual ASHRAE Golf Outing and Picnic	---	Ravenwood Golf Club	9:30 AM Golf 4:30 - 8:00 Picnic

2014-2015 Presidential Award of Excellence Summary

Chapter #	Chapter Name	Chapter Members	Member Promotion	Student Activities	Research Promotion	Chapter Technology Transfer	History	Chapter Operations	Chapter PAOE Totals
11	Rochester	238	275	0	155	0	0	0	430

Mission Statement

ASHRAE will advance the arts and sciences of heating, ventilation, air conditioning, refrigeration and related human factors to serve the evolving needs of the public and ASHRAE members.



Shaping Tomorrow's
Built Environment Today

Vision Statement

- will be the global leader in the arts and sciences of heating, ventilation, air conditioning and refrigeration.
- will be the foremost, authoritative, timely and responsive source of technical and educational information, standards and guidelines.
- will be the primary provider of opportunity for professional growth, recognizing and adapting to changing demographics, and embracing diversity.

President's Message

Greetings,

It is hard to believe we are more than half way thru our program year!

Our January meeting consisted of a refrigeration tour of the new Gene Polisseni Ice rink at RIT. Followed by an ASHRAE Rochester Chapter Family night hockey game at RIT. RIT Tigers vs. American International.

We are so appreciative and thankful for the fantastic presentation and tour put on Friday January 9TH at RIT. A special thanks to Christina Walter our program chair for organizing the great event and to all the presenters involved in this program. Rich Laudisi - LeChase, Rene Giannavola - LeChase, Mladen Nikolic - Smith + Andersen, Larry Lippold – BBB, Dan Krawczyk - Ice Builders, Steve Dear - Crosby Brownlie, Eric Johnson - Crosby Brownlie, Scott Martin- Crosby Brownlie, Rich Stein – RIT, Carl Palmieri –RIT and Carol Reed - RIT.

Other upcoming ASHRAE winter events include:

- The ASHRAE Conference takes place Jan. 24-28 Chicago, IL at the Palmer House Hilton. The ASHRAE co-sponsored AHR Expo, takes place Jan. 26-28 at McCormick Place.
- Rochester ASHRAE Buyers Guide. Opportunities to advertised in the years Buyers guide coming soon
- Annual Rochester ASHRAE Valentines Dance Friday February 6th at Colgate Rochester Divinity School.
- RES Engineering Symposium Rochester, NY to be held during the last week of April 2015.

Please consider joining us at our regular Monday lunch meeting Monday February 9th 12:00 PM at Mario's 2740 Monroe Ave. Air Flow Measurement, IAQ and Building Pressure Control presented by Mr. Jim Riendeau Ebtron Corp. PDH credits available.

Please check out our chapter website at www.rochester.ashraechapters.org or if facebook is your preferred method of communication take a moment to "like" us www.facebook.com/#!/ashraerochester

Edward J. Burns
Rochester ASHRAE President



Ed Burns, 2014-2015 President

Rochester Chapter Meetings

Highlights from January ASHRAE Meeting



Rich Laudisi (left) of Le-Chase Construction and RIT grad presents at the Ice Rink Tour.



The tour finished with a hockey game with the RIT Tigers taking on American International.

ASHRAE February Meeting Info

February ASHRAE Meeting

- Date:** Monday, February 9, 2015
Location: Mario's Italian Restaurant
Time: 12:00 PM
Cost: \$25
Speaker: Mr. Jim Riendeau, Vice President, Ebtron
- Topic:** Air Flow Measurement for improved IAQ and Building Pressure Control
- Note:** LEED and PDH Approved

Please RSVP by noon Thursday, February 5th to
Tim Duprey tim.duprey@pres-services.com

Like us on Facebook!



Visit our new Facebook page by searching for "ASHRAE Rochester" on Facebook. Any ideas for additions or improvements email to Mark Kukla at mark@airsystemsbalancing.com. Keep up to date with current events and photos from recent meetings.



This section of the newsletter is reserved for those firms wishing to advertise their desires to hire from the Chapters Membership.

If you are interested in utilizing this FREE service provided by the Rochester Chapter, please contact our Chapter President, Ed Burns 585-739-7548 or by email ejb@mechtechvac.com.

This service is available to ASHRAE members for any local firm in our industry looking for knowledgeable persons in the HVAC&R industry.

Plumbing/Fire Protection Engineers

M/E Engineering, P.C., Upstate NY's leading Mechanical and Electrical consulting engineering firm is seeking a talented and enthusiastic Plumbing/Fire Protection Project Engineer and Senior Engineer in our Rochester Office.



**Mechanical/Electrical
Engineering Consultants**

Qualifications/Experience:

Project Engineer:
BS or BT Mechanical Engineering
4-8 years experience

Senior Engineer:
BS or BT Mechanical Engineering
10-20 years experience

*Salary commensurate with
experience and education.
M/E provides a competitive benefits package.*

Submit your Resume and Cover Letter online at
<http://www.meengineering.com/careers/>
Click on the Application Invitation to Self Identify
OR mail your resume to M/E Engineering, P.C.,
150 North Chestnut Street, Rochester, NY 14604
Attn: Candice J. Schneggenburger

*M/E Engineering, P.C. is committed to leveraging the talent of a diverse workforce to create great opportunities for our business and our people.
EOE/AA. Minority/Female/Disability/Vet
M/E Engineering is not able to sponsor H1B Candidates at this time.*

Value-driven solutions.

Outside Sales Engineer Wanted

H&V Equipment Sales, Inc. a manufactures representative for applied HVAC equipment is seeking a motivated salesperson to help expand its market presence in Western and Central NY. Responsibilities will be working with local mechanical contractors in the plan/spec and design/build markets, providing quotations for equipment, generating submittals and sales orders. Candidates should poses a thorough knowledge of Mechanical HVAC systems, have good communication, sales and computer skills, and be willing to travel within the sales territory.

Other skills considered favorable to the applicant are actual HVAC field installation, service, HVAC design experience and/or HVAC sales experience.

Please email resume to Thomas Snyder at tsnyder@hvgroup.us

H&V Equipment Sales, Inc. is a division of H&V Group.

Rochester Chapter Committee Chairs Updates

CTTC / Programs

Technology Awards

The deadline for Chapter level ASHRAE Technology Awards is fast approaching. ASHRAE Technology Awards recognize outstanding achievements by members who have successfully applied innovative building design in the areas of occupant comfort, indoor air quality and energy conservation.

Awards are presented in six categories for new and existing facilities and are judged on the merits of Energy Efficiency, IAQ and Thermal Comfort, Innovation, Operation and Maintenance, Cost Effectiveness, Environmental Impact and Quality of Presentation.

Chapter level award applications require only a one page application, a schematic and a short narrative.

First place winners in each of the six categories at the chapter level will be submitted for judging in the regional awards competition.

Awards are intended for built projects and as such must have been occupied prior to September 1st, 2014 to be eligible.

The following link includes additional details about the awards program:

<https://www.ashrae.org/membership--conferences/honors--awards/technology-awards-program-overview>

Please consider representing the Rochester Chapter of ASHRAE by submitting your project to the chapter for consideration before **April 1, 2015**. Email Jeff Wiedrick at jwiedrick@bergmannpc.com with any questions, to receive an application form, for a sample application or any other concerns.

Young Engineers of ASHRAE (YEA)

Explorer's post with YEA

Our Rochester ASHRAE chapter and YEA are looking for volunteers to help with an Explorers Post. We are assembling a group of us to donate some time with local high school students. This program is an excellent opportunity for kids with interest in science and technology to spend time in different career fields. The intent is to allow these students to try out several potential career paths to investigate their interests. Our Explorer's program will expose the students to different disciplines within the HVAC industry to help gain exposure to our industry for future generations. Please contact Ed Burns or Matt Kremers mkremers@mcsmms.com if you are interested.

YEA Award of Individual Excellence

For more information on the award and how to submit, please contact Matt Kremers at mkremers@mcsmms.com.

Membership

ASHRAE Rochester Chapter- Membership Promotion

Please remember to take a few minutes to make sure that your profile is up to date at www.ASHRAE.org. Maybe you've changed jobs? email address? or would like to advance your membership (i.e. Associate Member to Member). Keeping this information current ensures that you get the most value out of ASHRAE.

There is also a lot of emphasis this year to attempt to do as much of our Membership Renewals and New Member Applications online to decrease the amount of paperwork for the Society and make the process "Greener." If you have any questions or need assistance with any Membership Issues, please let me know.

Thank you, and as always, thank you for your support for ASHRAE.

Sincerely,

Jake Hall

Membership Promotion Chair



Shaping Tomorrow's
Built Environment Today

Student Membership Application

What You'll Get With Your ASHRAE Student Membership!

What's "Cool" In ASHRAE

- ASHRAE maintains standards for indoor air quality
- ASHRAE promotes energy efficiency, savings and recovery
- ASHRAE reports on building controls, automation and integration
- ASHRAE focuses on green building issues and green technology
- ASHRAE promotes solar and other alternative energy sources
- ASHRAE offers certification programs, online learning opportunities and courses and seminars at ASHRAE Conferences

How Can ASHRAE Help You?

- Provide access to new technology
- Offer professional development opportunities
- Create opportunities for networking
- Offer online continuing education programs and eLearning programs

Student Member Benefits

- Access to members-only web pages
- Discounts on ASHRAE Handbooks
- Monthly ASHRAE Journal - print and digital
- HVAC&R Industry and Society Connections eNewsletters
- Discounted ASHRAE Annual and Winter Conference registration (AHR Expo, Student Program, Technical Sessions)
- Virtual online HVAC&R resume posting, job and internship searching program

ASHRAE Student Member Opportunities

- Society and chapter-level scholarships for both undergraduate and graduate engineering students
- Discounts for student members on select publications, go to www.ashrae.org/studentbookstore for more information
- Student Design Competition
- Networking with local ASHRAE Chapters
- Senior Undergraduate Project Grant Program
- At the student branch level, you'll enjoy meeting other students with similar interests - if your school hasn't yet started a student branch, take charge and contact a faculty member and ask for help on getting started!

You can continue your student membership after college with the SmartStart Program. The SmartStart program locks in the price of student dues for the first year of membership after graduation.

Visit www.ashrae.org/students
to join online!



You are cordially invited to the
**58th Annual
Valentine Dinner Dance**
Hosted by ASHRAE Rochester

Friday, February 6, 2015

Colgate Rochester Crozer Divinity School
1100 South Goodman Street
Rochester, New York

7:00pm Reception - Hors d'oeuvres & cocktails
8:00pm Dinner - As you select
9:15pm Dessert, Coffee and Dancing

Menu Selections

8 oz beef filet with burgundy reduction
Asian seared salmon
Chicken french
Roasted Vegetable Raviloi



For reservations, please mail or fax this registration form by January 24, 2015.

Make checks payable to Rochester Chapter ASHRAE and mail to:

Jody McGarry
ABR Wholesalers, Inc.
510 North Goodman Street
Rochester, New York 14609
Phone (585) 482-3601 | Fax (585) 482-6698

Name: _____ Beef · Chicken · Fish · Vegetarian

Name: _____ Beef · Chicken · Fish · Vegetarian

Number of people ___ x \$65* per person = \$_____ (enclosed)

*Special price of \$50 per person for members of the Y.E.A.



January 6, 2015

Dear ASHRAE Members,

On Friday, February 6, 2015, ASHRAE will be hosting its 58th Annual Valentine Dinner Dance at the Colgate Rochester Crozer Divinity School. ASHRAE is asking for your corporate support to donate \$325.00, billed to you as an advertising expense, to help defray the cost of this event. Your sponsorship will enable us to provide you with lively entertainment, a delicious meal, special desserts, and an evening with friends and colleagues you won't soon forget.

Your \$325 sponsorship comes with two complimentary dinners to the event, but this year, we're giving our sponsors a chance to save on more tickets! If you would like to sponsor the event and reserve a table for 10, consider becoming a gold-level sponsor. For \$800, you'll receive a reserved table, 10 dinners, and special "gold-level" sponsor designation.

As always, your sponsorship will be listed in the dinner program and dance flyers, as well as being listed in a full-page advertisement in the R.E.S monthly publication. You will certainly be recognized by your peers as an ASHRAE supporter.

An invoice is attached for your convenience. We thank you for your support and look forward to sharing this fantastic evening with you!

Very truly yours,

Jody McGarry
Valentine Dance Committee



Invoice

Advertising for February 2015 Promotion

(Check One)

Sponsor: \$325

Gold-Level Sponsor: \$800

Please make check payable to: ROCHESTER CHAPTER ASHRAE and mail to:

Rochester Chapter ASHRAE
c/o ABR Wholesalers, Inc.
ATTN: Jody McGarry
510 North Goodman Street
Rochester, NY 14609

Commitment

We would like to support the Rochester ASHRAE 2015 Promotion and agree to fulfill our commitment by March 1, 2015.

Company Name_____

Signed by_____

Date signed_____

Please return your check or commitment no later than January 24, 2015 to ABR Wholesalers, Inc. Thank you for your support.

Board of Governors Meeting Minutes



BOARD OF GOVERNORS MEETING MINUTES

Meeting Date: Wednesday, January 14th, 2015
Location: Carrier Office, Rochester, NY

President / CRC Alternate	Ed Burns	x
President Elect / Program	Christina Walter	x
Secretary	Jeff Close	
Treasurer	Bill Clark	
Immediate Past President / CRC Delegate	Rob Wind	
Board of Gov. (1)	Branden Farnsworth-Weinblatt	
Board of Gov. (1)	Tom Streber	
Board of Gov. (2)	Mike Benedict	x
Board of Gov. (2)	Scott Edwards	x
Board of Gov. (3)	Eric Smith	
Board of Gov. (3)	Paul Kenna	x
Attendance	Tim Duprey	
Historian	Lee Loomis	
Membership Promotion	Jake Hall	
Newsletter Editor	Scott Edwards	x
Research Promotion	Paul Kenna	x
Awards	Al Rodgers	
CTTC	Jeff Wiedrick	
Education	Bill Murray	
Publicity	Mark Kukla	
Website	Kevin Wind	
YEA Chair	Matt Kremers	x
Student Activities	Chris Lukasiewicz	
Nominating (2 nd Past President)	Michelle Sommerman	
Picnic/Golf Chair	Jim Browe	
Buyers Guide	Stephanie Dempsey	
Valentine's Dinner Dance	Jody M. McGarry	x
Refrigeration	Mike Nohle	

Board of Governors Meeting Minutes

Roll Call: The above noted individuals were present.

Call to Order:

Minutes:

- **Previous Meeting Minutes – Approved** no copies distributed or available. All minutes are available electronically only
- **Treasurer’s Report : Bill Clark**
 - Tax Return Extension Filed
 - Chapter Account balance \$10,037.82
 - ASHRAE Fund balance \$3,770.48
 - Charles Lynch Fund balance \$35,688.91
- **Program/ Tech Session: Chris Walters**
 - RIT ice rink program tour was a success. About 40 people were in attendance and 30 people attended the Hockey game afterwards.
 - February’s meeting has been LEED and PDH approved
 - Note that April’s meeting we will be moved up to 11am to accommodate the Distinguished Lecturer’s travel schedule.
- **Refrigeration: Mike Nohle**
 - No report
- **Chapter Tech Energy & Govt Activities:**
 - No report
- **Tech Awards: Jeff Wiedrick**
 - Rochester chapter tech award submissions due by 4/1/15
- **Attendance: Tim Duprey**
 - No Report
 - Board discussed having a secondary person with a distribution list as a backup for future mailings. Possibility of having the distribution list on the chapter’s gmail account or on Office 365
- **Membership: Jake Hall**
- 235 members. We are down three from last quarter, but seeing some activity and emails for new members.
- **Awards: Al Rodgers**
 - No report, however the 2013/2014 Realto E. Cherne award plaque is still planned to be presented at the Valentine’s day dinner dance
- **Student Activities: Chris Lukasiewicz**
 - No report.
 - The board discussed future scholarship options
- **YEA: Matt Kremers**
 - Planning on a steam training session, twice in the spring. More details to follow.

Board of Governors Meeting Minutes

- **Resource Promotion:** Paul Kenna
 - No report
- **Newsletter:** Scott Edwards
 - Please be aware of RES deadlines
 - Electronic Newsletter deadline = 18th of each month
- **Buyer's Guide:** Stephanie Dempsey
 - Plan is to maintain advertising rate at \$ 125. Jan. Contact potential new advertisers and advertise in newsletter, Feb. contact current advertisers, March/April receive updated advertisements as needed / update website.
- **Historian:** Lee Loomis
 - No report
- **Website:** Kevin Wind
 - Committee chairs need to forward updated information to Kevin to keep information on website current.
- **Nominating:**
 - Michelle Sommerman has completed selecting the nominating committee members.
- **Publicity:** Mark Kukla
 - No report.
- **Valentine's Dinner Dance:** Jody McGarry
 - Schedule at Colgate Divinity School on 2/6/15 7:00pm
 - We currently have 7 sponsors so far
- **Picnic / Golf Outing:** Jim Browe
 - No report – scheduled for 5/11/2015
- **CRC2016:** Jim Browe
 - budget needs to be created. Ed Burns and Jeff Close to meet with Jim Browe
 - Space at the Hyatt has been reserved
- **Old Business:**
 - Make sure everyone is logging PAOE points
 - Grass Roots community project possibilities - Seneca Waterway's Explorer's Post programs – Rob Hudson YEA. Sensory Stimulation building at the Rochester Rotary Sunshine Campus
 - Energy Modeling Training Session here in Rochester w NYSERDA discount possibility – Bill Bishop.
 - Webcast promotion – New Tomorrows for Today's Buildings April 23,2015 1-4pm
- **New Business:**
 - Joseph Furman, our Director & Regional Chair, is going to reschedule coming to Rochester for one of our remaining Chapter meetings.

Next Meeting: Friday February 6th @ 7:30am Carrier 21 Humboldt St. Rochester, NY 14609

- The meeting was adjourned at 8:40 AM

2015 Annual Engineering Symposium in Rochester

Earn up to 7 pdh's

Sponsored by

Rochester's Technical and Engineering Societies and RIT

Wednesday, April 29th 2015

Courses available in:

Civil, Electrical, Lighting, Mechanical, HVAC, Plumbing

Radisson Hotel Rochester Riverside

120 East Main Street, Rochester NY

Time: 7:30 am to 6:30 pm

\$130 Advance Registration

\$20 Student Registration

\$160 AFTER March 31, 2015 and at the door

For more information and to register please visit

www.engineeringsymposiumrochester.com

The Monroe Chapter of NYSSPE, in accordance with ADA compliance, will make every attempt to provide reasonable accommodation for those requiring additional services to participate in our educational programs. If you should require such service, please contact Lynne Irwin at the Rochester Engineering Society (res@frontiernet.net or 585-254-2350) to request support by April 1, 2015.

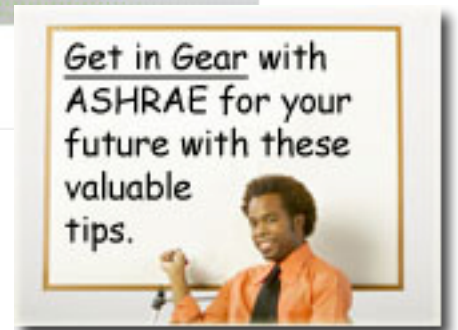
15-Jan-15

2015 ENGINEERING SYMPOSIUM IN ROCHESTER

Sponsored by
Rochester's Technical and Engineering Societies
April 29, 2015

PDH hours will be acceptable in New York State. Schedule subject to change.

Registration and Continental Breakfast						
Welcoming Remarks: Chris Devries, Chair of the 2015 ESR Committee						
	Civil Engineering Sponsored by ASCE	Civil Engineering Sponsored by ASCE	Mechanical Engineering Sponsored by ASME	Electrical Sponsored by IEEE	Mechanical, Plumbing, & Fire Protection Sponsored by ASHRAE and ASPE	Lighting and Power Sponsored by Elect. Assoc. of W N Y
Room	Riverview	Douglas	Fitzhugh	Eastman	Silver	Gleason
Host	Jim Baker	Kip Finley	Ron Salzman	Dave Krispinsky	Jennifer Wengender	Joe Dombrowski
8:15 to 8:30 8:30 to 8:45	Lago Casino Site Analysis and Design <i>Peter Vars</i>	Geotechnical - Piles <i>Wendel Armstrong</i>	Engineering Disasters: A Hazardous Materials Management Perspective <i>Richard Cartwright</i>	Audio Engineering 4. Dr. Sung Young Kim	NYS Building Codes and the use of Referenced Standards <i>Andy Taylor</i>	RESTRAINING AND ISOLATING ROOF TOP EQUIPMENT-PER NEW YORK STATE BUILDING CODE AND ASCE 7-05 DICK SHERREN
Break						
9:30 to 9:45 9:45 to 10:45	Planning Around Critical Water System Component Downtime <i>Clem Chung</i>	THM Removal – Small System Applications <i>Tom Clark</i>	Science and Technology at the Laboratory for Laser Energetics <i>Steven Ivanco</i>	RIT's Micro Grid system in the Golsano Sustainability Building 2. Dr. Christopher Piggot	Coordination of Building Storm water discharge with on-site Disposal Regulations <i>David Johnson</i>	ZONE SELECTIVE INTERLOCKING <i>BRENT VILD</i>
Break						
10:45 to 11:00 11:00 to 12:00	Civic Center Green Roof <i>Jim Krapf</i>	Air Transport Engineering foundations of operational Safety <i>Fred White</i>	Particle Control with Holographic Optical Tweezers <i>L. Lindley</i>	Software Defined Radio <i>Dr. Miguel Bazdresch</i>	Case Study: East Irondequoit CSD Cogeneration system <i>Dave Hart, PE</i>	READING TIME CURRENT CURVES <i>JOHN KOWAL</i>
Lunch and Keynote Program Ethics for Engineers <i>Peter DeMarco -Priority Thinking</i>						
	Civil Engineering Sponsored by ASCE	Civil Engineering Sponsored by NYSATE	Mechanical Engineering Sponsored by ASME	Electrical Sponsored by IEEE	Mechanical, Plumbing, & Fire Protection Sponsored by ASHRAE and ASPE	Lighting and Power Sponsored by IES Rochester
Room	Riverview	Douglas	Fitzhugh	Eastman	Silver	Gleason
Host	Erin McCormick	Paul Presutti	Bill Bishop	Dave Krispinsky	Michelle Sommerman	Joe Dombrowski
12:00 to 1:30	TBA	Access 360 Structural Lifting <i>Howard Ressel, Chris Bayer</i>	Additive Manufacturing <i>Denis Cormier</i>	Vehicular Collision Avoidance System 3. Dr. Clark Hochgraf	Natorium Design <i>Jordan Daniov</i>	SCADA SYSTEMS MIKE MCGRATH
Break						
1:30 to 2:45 2:45 to 3:45	Geotechnical Analysis and Construction of New Maid of the Mist Drydocks in the Niagara River Gorge <i>Mike Mann</i>	Aerial Project – Transforming the Middle Gorge of the Genesee River <i>Michael Phillipson</i>	Human Contributions to Global Warming Part 1 <i>Bill Bishop</i>	GE diesel locomotives 1. Dr. Shola Olabisi	Energy Modeling and Analysis (for existing buildings) <i>Erik Durka</i>	LED Lighting <i>Mike Trippe</i>
Break						
3:45 to 4:00 4:00 to 5:00	Design Build Roundtable Lessons Learned <i>Various Presenters</i>	Cost Effective Engineering Techniques for Environmental Benefits <i>Sarah Piecuch</i>	Human Contributions to Global Warming Part 2 <i>Bill Bishop</i>	Electrical/Mechanical Product Safety Compliance (Speaker TBA)	VRF Applications <i>Marty Brinton</i>	Lighting Controls And Energy Codes <i>Brian Horner</i>
Cocktails and Conversation in the Lounge						
5:00 to 7:00						



Tips for ASHRAE Scholarship Applicants

Make sure ...

- You meet all applicable criteria
- You read the application carefully and answer all questions completely and honestly.
- The application and all required documents are submitted or postmarked on or before the applicable deadline.
- Your application is NEAT, legible (typed or handwritten clearly), and proper English (correct grammar and spelling) is used when responding to essay questions.
- To take time to submit a brief, non-required introductory cover letter
- You are clear and thorough when stating goals and financial need.
- You contact the nearest ASHRAE chapter for an interview with the Student Activities Chair or other officer to learn more about the Society.
- You find out if your school hosts an ASHRAE student branch.
- You contact ASHRAE headquarters if you have any questions and to ensure your application has been completed and submitted properly.

More information on the scholarship and details on how to apply can be found at www.ashrae.org/scholarships.



Planning your Chapter's Event Calendar?

Well, We've got April Covered!

Register your Chapter to view the 2015 ASHRAE Webcast at www.ashrae.org/webcast. Registration begins on March 23, 2015. Add lunch, a speaker, or even a product show and make it a full-day event.

- **Attend a live, interactive, educational program.** This **FREE** webcast will feature industry experts who will define the benefits of existing building commissioning for the environment, occupants, operations staff, and overall ownership costs
- Chapter members and other attendees at your event may earn **3 Professional Development Hours (PDHs)** by completing the online Participant Reaction Form by May 8, 2015
- The webcast has been approved for **3 GBCI Continuing Education (CE) Hours** and **3 AIA Learning Units (LU)**
- Chapters who register to view the webcast will earn **100 PAOE points**



Promote the Webcast

Use the flyer and article in the online [Media Kit](#) to promote the webcast viewing at your Chapter event in your newsletter and on your webpage. We will also be sending the Chapter Presidents and Chapter CTTC Chairs hard copies of the Webcast Guide to promote the program at work, with other organizations, and of course, at your Chapter meetings. Please email ashrae-webcast@ashrae.org to request additional copies.

Need more information?

If you have questions about the webcast, call 678-539-1200 or email ashrae-webcast@ashrae.org.

For more information about the program, continuing education credits, speakers, registration, and Existing Building Commissioning resources visit us online at www.ashrae.org/webcast.

NOT ABLE TO WATCH THE LIVE WEBCAST ON APRIL 23?

Not a problem! Register your Chapter and view the Webcast online between April 23rd and May 8th. PAOE points and continuing education credits are also available for the Webcast On Demand. Visit www.ashrae.org/webcast for details.

 Like us on Facebook |  Follow us on Twitter |  Join the conversation on ASHRAEExCHANGE



News

1791 Tullie Cir. NE | Atlanta, Ga. 30329-2305 | 404-636-8400 | www.ashrae.org

For Release:

Jan. 8, 2015

Contact: Jodi Scott

Public Relations

678-539-1140

jscott@ashrae.org

Save the Date: Sept. 30 –Oct. 2, 2015

ASHRAE Announces Next Energy Modeling Conference, Call for Presenters

ATLANTA – ASHRAE has announced that its next “Energy Modeling Conference: Tools for Designing High Performance Buildings” will take place September 30 to October 2, 2015, in Atlanta.

The conference builds on past ASHRAE Energy Modeling Conferences by addressing the industry need for “how to” do certain aspects of energy and building simulation, according to Dennis Knight, conference chair, said.

“The conference theme is ‘Making the Difference with Modeling: From Concept to Facility Management,’ and broadly covers modeling from start to finish through high quality case study presentations,” he said.

ASHRAE seeks presenters who can speak specifically about the use of modeling to design, construct, commission, operate and maintain new and existing buildings to improve a building’s energy performance and indoor environmental quality while reducing the cost to operate and maintain them. The conference will focus on the tools, step-by-step processes, best practices and workflows for the application of single or multiple modeling techniques.

Presentations addressing the following modeling techniques and processes are requested:

- HVAC load analysis
- Daylighting
- Water use
- Computational fluid dynamics
- BIM integration
- Indoor environmental quality
- Natural ventilation and passive systems
- Humidity control
- Envelope optimization
- Whole building simulation
- Energy analysis
- Code compliance
- Building performance rating system analysis
- Utility rebates
- Incentive programs
- Renewable energy systems
- Performance assessment (modeled versus actual performance)
- Sensitivity and risk analysis
- Modeling workflow and quality control for both input and output

Continued on next page

Presenters are asked to highlight the economic benefits (business cases) for owners, design professionals, constructors and facility managers for using energy models and building simulations throughout a building's life cycle:

- Conceptual design
- Final design
- M&V
- Existing building performance assessment
- Retrofit assessment and end of useful life decision making

The conference seeks to facilitate communication and coordination within the energy modeling and building simulation industry and software developers to advance the industry's ability to better model high performance buildings and to advance the practitioner's understanding of the application of existing and new tools, new technology and processes for energy modeling, whole building simulation and building HVAC system design.

Participants in the conference will be day-to-day energy modeling and building simulation practicing professionals, principals of consulting firms, consulting engineers, other practicing professionals and software developers.

To submit a presentation application, visit www.ashrae.org/EMC2015. Information required for the submission are a 300-500 word abstract, 100 word "promotion" abstract and other information indicated on the website.

Presenters will give an oral presentation, have their presentations posted online for conference attendees and receive a substantially-reduced conference registration rate.

Presentation Schedule:

- Abstracts due: March 2, 2015
- Notification of abstract decisions: March 16, 2015
- Accepted speaker forms due: March 30, 2015
- Presentations due: Sept. 8, 2015

For more information, including sponsorship opportunities and conference schedule, go to www.ashrae.org/EMC2015.

ASHRAE, founded in 1894, is a global society advancing human well-being through sustainable technology for the built environment. The Society and its more than 50,000 members worldwide focus on building systems, energy efficiency, indoor air quality, refrigeration and sustainability. Through research, standards writing, publishing, certification and continuing education, ASHRAE shapes tomorrow's built environment today. More information can be found at www.ashrae.org/news.

Like us on Facebook | Follow us on Twitter | Join the conversation on ASHRAExCHANGE



News

1791 Tullie Cir. NE | Atlanta, Ga. 30329-2305 | 404-636-8400 | www.ashrae.org

For Release:
Jan. 12, 2015

Contact: Jodi Scott
Public Relations
678-539-1140
jscott@ashrae.org

New 2015 Regional Standards and Effects on HVAC Industry Highlighted in Free ASHRAE Session

ATLANTA – The new year ushered in new regional federal efficiency standards for residential split system and packaged central air conditioners. Guidance on how to meet those standards will be shared during a free session at ASHRAE's 2015 Winter Conference, Jan. 24-28, Chicago.

The rationale for these standards is that the United States climate varies enormously; higher standards that save money in Mobile may not save as much in Minneapolis. Regional standards ensure that we can get as much cost-effective efficiency as possible, evaluating the cost effectiveness more appropriately for different locales. The standards took effect January 1, 2015, although there are grace periods before enforcement will start.

Speakers will discuss these new standards during the free AHR Expo Session, New 2015 Regional Standards and the Effects on Different Areas of the HVAC Industry, which takes place from 3-4:30 p.m. Monday, Jan. 26, at the AHR Expo, McCormick Place, room S106a. No badge is required to attend.

In January 2010, manufacturers represented by the Air-Conditioning, Heating and Refrigeration Institute (AHRI) reached a consensus with efficiency advocates on a proposal to adopt regional standards. Through negotiation with other parts of the HVAC&R industry, a draft standard was developed with different required efficiencies for air conditioning using split system and packaged air conditioners in each of three geographic regions. The consensus was adopted by the U.S. Department of Energy (DOE) as a *Direct Final Rule* in January 2011. For the first time, federal regulations are based on installation date as well as date of manufacture, so new regional standards affect what distributors and contractors can sell and what consumers can purchase. The Expo Session explores the new rule from the perspectives of experts involved in its origin, evolution and implementation.

The session is moderated by Kristin Heinemeier, University of California at Davis. Harvey Sachs, American Council for an Energy-Efficient Economy, will outline the responsibilities of all parties as a result of the Negotiated Rulemaking on Enforcement of Regional Standards in summer 2014, which is being codified by DOE. The new Rule, coupled with a revised FTC "Yellow Label," should give the best possible outcome for all parties trying to achieve efficiency and do business.

Karim Amrane, Air-Conditioning, Heating and Refrigeration Institute and a negotiator of the regional agreement, will explain the manufacturer's perspective, including new burdens for data tracking and retention.

Distributors face some significant changes in how they do business, to be discussed by Ted Duffy from Hughes Supply, Savannah, Ga. Even with the 18 month enforcement delay, distributors worry about making effective business decisions in a new environment. Areas in which distribution crosses regional boundaries, and who is responsible for violations, are major concerns.

Harlan Krepoik, Tidewater Community College, Portsmouth, Va., will offer the contractor's perspective, focusing on compliance, liability, and cashflow forecasting and growth planning. New record-keeping and information disclosure requirements may help the reputable contractor, particularly if the Federal Trade Commission (FTC) changes the label to appropriately support the regional standards.

The Conference takes place at the Palmer House Hilton, while the ASHRAE co-sponsored AHR Expo is held Jan. 26-28, McCormick Place. Complete Conference information and registration can be found at www.ashrae.org/chicago.

The Technical Program begins Sunday, Jan. 25, and offers over 200 Professional Development Hours, as well as Continuing Education Units, which can be applied toward a Professional Engineering license.

Like us on Facebook | Follow us on Twitter | Join the conversation on ASHRAExCHANGE



News

1791 Tullie Cir. NE | Atlanta, Ga. 30329-2305 | 404-636-8400 | www.ashrae.org

For Release:
Jan. 24, 2015

Contact: Jodi Scott
Public Relations
678-539-1140
jscott@ashrae.org

ASHRAE Recognizes Outstanding Industry Achievements

ATLANTA – Sixty-six people were recognized for their contributions to the Society and the built environment industry at ASHRAE's 2015 Winter Conference, Jan. 24-28, Chicago, Ill.

The F. Paul Anderson Award, ASHRAE's highest for technical achievement, is given for notable achievement of outstanding services performed in the HVAC&R field. The recipient is Presidential Member Damon Gowan, Fellow ASHRAE, Life Member, retired president and chief executive officer, EMCOR-Gowan, Inc., Houston, Texas.

The ASHRAE Hall of Fame honors deceased members of the Society who have made milestone contributions to the growth of ASHRAE-related technology or the development of ASHRAE as a society. Inductees are Rolla Carpenter, 1852–1919, an author of the first heating and ventilating textbook for engineers, "Heating and Ventilating Buildings: a Manual for Heating Engineers and Architects" and "Instructions for Mechanical Laboratory Practice: Text-Book of Experimental Engineering;" and Robert Tamblin, P.Eng., Fellow ASHRAE, Life Member, 1921–2012, a pioneer in many areas, including application of heat pumps in commercial buildings (1950s), use of an on-floor fan system for variable air volume applications in commercial buildings (1960s), applications for both hot and cold storage tanks in commercial buildings (1970s), leading the first engineering firm to specialize in energy management (1973) and work on seasonal chilled water storage (1980s). Fellow ASHRAE is a membership grade that recognizes members who have attained distinction and made substantial contributions in HVAC&R and the built environment such as education, research, engineering design and consultation, publications, presentations and mentoring. The Society elevated 14 members to the grade of Fellow:

- Tony Costa, P.E., Life Member, president and chief mechanical engineer, Costa Engineers, Napa, Calif.
- Pankaj R. Dharkar, president and founder, Pankaj Dharkar and Associates, Ahmedabad Gujarat, India.
- Egils Dzelzitis, Dr.-Ing., C.Eng., BEAP, BEMP, OPMP, a professor, Ripa Technical University, and CEO, Lafiap, Ripa, Latvia.
- Bruce L. Flaniken, P.E., Life Member, manager of facilities maintenance services engineering, Houston Methodist Hospital, Houston, Texas.
- Ravisankar Ganta, P.E., Life Member, senior mechanical engineer III, Chicago Bridge and Iron Co., Vogle Power Plants 3 and 4, Waynesboro, Ga.
- Donald J. Hay, Life Member, general director, Technologia en Sistemas de Refrigeracion SA de CV, Apodaca, NL, Mexico.
- W. Luis Lagomarsino, Ing., director, Lagomarsino and Associates, Montevideo, Uruguay.
- Erin McConahey, P.E., HBDP, trustee and principal, Arup, Los Angeles, Calif.
- Kirk T. Mescher, P.E., principal, CM Engineering, Columbia, Mo.
- Daniel H. Nall, P.E., FAIA, BEMP, HBDP, vice president, regional director of high performance buildings, Syska Hennessey Group, New York, N.Y.
- Ronald L. Petersen, Ph.D., principal and vice president, CPP Inc., Fort Collins, Colo.
- Dusan Petras, Ph.D., a full professor at Slovak University of Technology, and president of the Slovak Society of Environmental Technology, both located in Bratislava, Slovak Republic.
- Samir R. Traboulsi, Ph.D., P.Eng., BEAP, HPDP, senior lecturer, American University of Beirut; general manager, Thermotrade; and managing director, Ranec SARL, all in Beirut, Lebanon.
- Donald J. Winston, P.E., president, Donald J. Winston, New York, N.Y.

Continued on next page

Continued from previous page

The ASHRAE Technology Awards recognize outstanding achievements by ASHRAE members and building owners who have successfully applied innovative building design. Their designs incorporate ASHRAE standards for effective energy management and indoor air quality and serve to communicate innovative systems design. Winning projects are selected from entries earning regional awards. First place recipients are:

- William C. Weinaug Jr., P.E., vice president, exp U.S. Services Inc., Maitland, Fla., in the existing industry facilities or processes category for the Antarctica Empire of the Penguin animal exhibit and ride attraction, Orlando, Fla. The facility is owned by Sea World Parks and Entertainment Inc.
- Kateri Héon, Ing., project manager; and Pietro Guerra, Ing., mechanical-electrical director; exp, Montreal, Quebec, in the existing other institutional buildings category for Centre Civique de Dollard-des-Ormeaux, Quebec. The building is owned by the Ville de Dollard-des-Ormeaux.
- Benjamin Frank Gozart, engineer; Tom Marseille, P.E., managing director; WSP; Charles Chaloeicheep, P.E., WSP Built Ecology; Seattle, Wash.; Tom Boysen Jr., P.E., senior project manager, Sellen Construction, Seattle, Wash.; in the new commercial buildings category for Federal Center South, Building 12021, Seattle, Wash. The building is owned by the U.S. General Services Administration.
- Jason Troy LaRosh, P.E., mechanical engineer, Angus-Young Associates, Janesville, Wis., in the existing public assembly category for the Janesville Ice Arena addition and renovation. The building is owned by the City of Janesville.
- Mark Stavig, P.E., principal, CDi+Mazzetti, Lynnwood, Wash., in the new health care facilities category for Peace Island Medical Center, San Juan Island, Wash. The building is owned by PeaceHealth.
- Matthew William Longsine, P.E., associate, and Henry Di Gregorio, senior vice president, WSP, Seattle, Wash., in the new other institutional buildings category for the Tacoma Center for Urban Waters, Tacoma, Wash. The building is owned by the National Development Council, HEDC Public-Private Partnerships on behalf of the City of Tacoma.
- Brian Haugk, P.E., mechanical principal, and Brian Cannon, mechanical senior associate, Hargis Engineers Inc., Seattle, Wash., in the new educational facilities category for Valley View Middle School, Snohomish, Wash. The school is owned by Snohomish School District No. 201.
- Roger (Jui-Chen) Chang, P.E., BEMP, principal and director of engineering and sustainability, Westlake Reed Leskosky, Washington, D.C., in the existing commercial buildings category for the Wayne N. Aspinall Federal Building and U.S. Courthouse, Grand Junction, Colo. The building is owned by the U.S. General Services Administration, Rocky Mountain Region and was completed by WRL with The Beck Group.
- Art Sutherland, president, Accent Refrigeration Systems, Victoria, British Columbia, in the new public assembly category for the Westhills Recreation Center, Langford, British Columbia. The building is owned by the City of Langford.

The ASHRAE Student Design Competition focused on a two-story office building in New York City with a research and development facility. ASHRAE student teams outside the United States were allowed to locate the building in the capital of their state, province or country.

First place in HVAC Design Calculations is awarded to a team from the University of Central Florida, Orlando: Christopher Erickson, associate engineer, Universal Creative, Orlando, Fla.; Ian Faulkner, mechanical designer, exp U.S. Services, Orlando, Fla.; DJ Marshall, mechanical engineer, TLC Engineering for Architecture, Orlando, Fla.; Richard Suarez, quality engineer, Rockwell Collins, San Diego, Calif.; Kristian Jack Szymanski, Coral Springs, Fla.; and Ju Young Yu, Winter Park, Fla.

First place in HVAC System Selection is awarded to a team from Kansas State University, Manhattan, Kans.: John Gaito, Kathryn Helmer, Lexie Oliver, Alex Pint, Megan C. Walkowiak and Gordon Zimmerman, all of whom are senior level students in architectural engineering.

First place in Integrated Sustainable Building Design is awarded to a team from Montana State University, Bozeman: Elyse Casper; Theresa R. Lindenau, Bozeman, Mont.; Terra Moran, materials engineer, Imperial Oil, Calgary, Alberta; Mary Peterson, project engineer in the commercial solutions division, 3M, Saint Paul, Minn.; and Martin Reaves, founder, Monolithic, Bozeman, Mont.

ASHRAE also announces the recipients of the 2014 Applied Engineering Challenge, in which students were required to design and specify a small, portable air conditioner that must be affordable, maintainable and effective in the local cultural environment.

The first place Applied Engineering Challenge recipients are a team from California Polytechnic State University, San Luis Obispo: Juan Silva, sales operation, SYSERCO, Fremont, Calif.; and Nelson E. Echeverry, design engineer, Donald F. Dickerson Associates, Tarzana, Calif.

The E.K. Campbell Award of Merit honors an individual for outstanding service and achievement in teaching and is presented by the Life Members Club. The recipient is Charles "Charlie" Culp, Ph.D., P.E., Fellow ASHRAE, Life Member, HBDP, a professor in the Department of Architecture, College of Architecture, Texas A&M University, College Station, and associate director of the Energy Systems Laboratory of the Texas Engineering Experiment Station of the Texas A&M University system.

Continued on next page

The ASHRAE Award for Distinguished Public Service recognizes members who have performed outstanding public service in their community and, in doing so, have helped to improve the public image of the engineer. The recipient is William Sigman, P.E., Life Member, executive vice president and principal, BSA Life Structures, Fishers, Ind.

The John F. James International Award recognizes a member who has done the most to enhance the Society's international presence. The recipient is Presidential Member Kent Peterson, P.E., Fellow ASHRAE, BEAP, vice president and chief engineer, P2S Engineering, Long Beach, Calif.

The ASHRAE Pioneers of Industry Award recognizes deceased individuals who have made milestone contributions to the growth of HVAC&R. Recipients are Carl Linde, 1842-1934, known as a scientist, engineer and an industrialist, who developed the first methods to commercially liquefy air and used his knowledge to design his own refrigeration machines, sold throughout the world; and Andrew Muhl, 1831-1892, who received patents for an ice machine and who produced ice that was superior and cheaper than ice being harvested from rivers, making it feasible to ship Texas beef to markets in the East and Midwest.

Honorary Members, elected by the Board of Directors are defined as notable persons of preeminent professional distinction. Recipient Stefano Marino, Ph.D., of Roma, Italy, served as the Vatican chief engineer who oversaw restoration of Michelangelo's frescos in the Sistine Chapel, as well as a complete redesign of its environmental controls.

ASHRAE, founded in 1894, is a global society advancing human well-being through sustainable technology for the built environment. The Society and its more than 50,000 members worldwide focus on building systems, energy efficiency, indoor air quality, refrigeration and sustainability. Through research, standards writing, publishing, certification and continuing education, ASHRAE shapes tomorrow's built environment today. More information can be found at www.ashrae.org/news.

 Like us on Facebook |  Follow us on Twitter |  Join the conversation on ASHRAEExchange



News

1791 Tullie Cir. NE | Atlanta, Ga. 30329-2305 | 404-636-8400 | www.ashrae.org

For Release:

Jan. 28, 2015

Contact: Jodi Scott

Public Relations

678-539-1140

jscott@ashrae.org

Green Building Initiative Recognizes ASHRAE for Their Four Green Globes Achievement

ATLANTA — Green Building Initiative (GBI), a nonprofit organization committed to accelerating the adoption of sustainable building practices and providers of the Green Globes® rating system, congratulates ASHRAE on achieving the highest rating, of four Green Globes, on their international headquarters.

Jerry Yudelson, Green Building Initiatives president, presented the rating system certificate to ASHRAE President Tom Phoenix during ASHRAE's 2015 Winter Conference held this week in Chicago, Illinois.

"ASHRAE represents the 'gold standard' for building energy efficiency standards. We're pleased that ASHRAE now stands at the pinnacle of achievement for green building, with the award of four Green Globes for its Atlanta headquarters building from the Green Building Initiative. Through a months-long process, GBI's Green Globes Assessor worked with ASHRAE staff to document the building's sustainable management practices. Only 3% of projects assessed by GBI achieve four Globes certification, so this recognition is a rare honor and a tribute to ASHRAE's enlightened building operations," said Yudelson.

Sustainable measures include ongoing benchmarking in ENERGYSTAR for energy and water consumption; energy audits through ASHRAE's Building Energy Quotient system; quarterly inspection and maintenance of systems containing ozone depleting substances; water audits for leaks and regular monitoring of recycling efforts and waste reduction and diversion rate.

"ASHRAE continues to analyze and support technologies and tools that help accelerate the transformation to a more sustainable built environment globally. As building sustainability rating systems gain more traction, they can guide building owners and operators, and the occupants they serve, on ways to create healthy indoor environments that also reduce the impact of buildings on outdoor environments. Sustainability rating systems complement consensus standards and progressive building codes as we continually advance building systems, designs and operations. We are delighted that our Headquarters building has earned the highest Green Globes rating to complement our original LEED Platinum rating," said Tom Phoenix, 2014-15 ASHRAE President.

About the Green Building Initiative™ - The GBI is a nonprofit organization and American National Standards Institute (ANSI) Standards Development Organization dedicated to accelerating the adoption of green building practices. Founded in 2004, the organization is the sole U.S. provider of the Green Globes® and federal Guiding Principles Compliance green building certification programs. To learn more, visit the GBI website, www.thegbi.org.

About ASHRAE - ASHRAE, founded in 1894, is a global society advancing human well-being through sustainable technology for the built environment. The Society and its more than 50,000 members worldwide focus on building systems, energy efficiency, indoor air quality, refrigeration and sustainability. Through research, standards writing, publishing, certification and continuing education, ASHRAE shapes tomorrow's built environment today. More information can be found at www.ashrae.org/news.